

Figures of Thai Export & Import of Tuna, Salmon, Sardine, Mackerel and Petfood in Jan – June 2018

I. Accumulated statistic Jan-June 2018

1. Thai **exports** of canned / pouch tuna, tuna loin, petfood(fish), salmon, sardine and mackerel to the world
2. Thai **exports** of tuna products to main market
3. Thai **imports** of frozen raw tuna from the world
4. Thai **exports** of salmon, sardine and mackerel products to top 5 countries
5. Thai **imports** of frozen raw salmon, sardine and mackerel from the world

II. Graph : Monthly statistic in 2017/ June 2018

6. Graph :Thai **exports** quantity of **canned / Pouch tuna + tuna loin** to the world
7. Graph :Thai **exports** quantity of **Petfood (fish)** to the world
8. Graph :Thai **imports** of **frozen raw tuna** from the world
9. Graph :Thai **imports** of **frozen raw tuna** by species from the world

III. Yearly statistic in 2015-2017

10. Thai **imports** of frozen raw tuna by species from the world
11. Thai **imports** of frozen Whole Round tuna from the world by Countries
12. Thai **exports** of tuna products to the world, USA, Middle East, EU, Japan and others
13. Thai **exports** of tuna products to the world by Countries
14. Thai **exports** of canned / pouch tuna, tuna loin, petfood (fish), salmon, sardine and mackerel to the world

IV. Thai H.S. code canned / pouch tuna, tuna loin and petfood (fish)

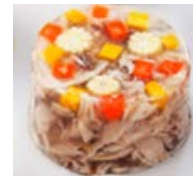


I. Accumulated statistic **Jan- June 2018**

1. Thai **exports** of canned / pouch tuna, tuna loin, petfood (fish), salmon, sardine and mackerel to the world in **Jan – June 2018**
2. Thai **exports** of tuna products to main market in **Jan – June 2018**
3. Thai **imports** of frozen raw tuna from the world in **Jan – June 2018**
4. Thai **exports** of salmon, sardine and mackerel products to top 5 countries in **Jan – June 2018**
5. Thai **imports** of frozen raw salmon, sardine and mackerel from the world in **Jan – June 2018**

1. Thai exports of canned / pouch tuna, tuna loin, petfood (fish), salmon, sardine and mackerel to the world in Jan – June 2018

Product / H.S. Code	Quantity (Ton)		% Growth	%Share	Value (Million Baht)		% Growth	%Share	Value (Million USD)		% Growth	%Share
	Jan - June 2017	Jan - June 2018			Jan - June 2017	Jan - June 2018			Jan - June 2017	Jan - June 2018		
Canned / Pouch Tuna + Tuna Loin 1604.14	245,197	239,841	-2	76	34,486	33,720	-2	81	994	1,070	8	81
Petfood (fish) 2309.10.10.001	35,099	41,759	19	13	3,872	4,436	15	11	112	141	26	11
Salmon 1604.11.10	5,916	5,019	-15	2	1,384	1,336	-3	3	40	42	6	3
Sardine 1604.13.11	13,924	15,102	8	5	1,100	1,176	7	3	32	37	18	3
Mackerel 1604.15.10	12,255	13,670	12	4	965	1,085	12	3	28	34	24	3
Total	312,392	315,391	1	100	41,808	41,753	0	100	1,205	1,325	10	100



2. Thai exports of tuna products to main market in Jan – June 2018

Product / H.S. Code	Country	Quantity (Ton)		% Growth	%Share	Value (million Baht)		% Growth	%Share	Value (million USD)		% Growth	%Share
		Jan -June 2017	Jan - June 2018			Jan -June 2017	Jan -June 2018			Jan - June 2017	Jan -June 2018		
Canned / Pouch Tuna + Tuna Loin 1604.14	World	245,197	239,841	-2	100	34,486	33,720	-2	100	994	1,070	8	100
	U.S.A.	41,040	46,041	12	19	6,325	6,927	10	21	182	219	20	20
	Middle east	48,354	44,474	-8	19	6,723	6,020	-10.5	18	194	191	-1	18
	EU	15,741	11,659	-26	5	2,513	1,841	-27	5	72	59	-19	5
	Japan	17,830	20,119	13	8	3,033	3,410	12	10	88	108	24	10
	Other	122,233	117,548	-4	49	15,892	15,522	-2	46	458	493	8	46
Petfood (fish) 2309.10.10.001	World	35,099	41,759	19	100	3,872	4,436	15	100	112	141	26	100
	U.S.A.	4,657	4,626	-1	11	667	715	7	16	19	23	18	16
	Middle east	203	225	11	0.5	18	18	2	0.4	0.5	0.6	13	0.4
	EU	7,294	7,244	-1	17	1,120	1,133	1	26	32	36	11	26
	Japan	13,596	14,368	6	34	1,301	1,361	5	31	38	43	15	31
	Other	9,349	15,295	64	37	766	1,210	58	27	22	38	74	27
Total of Tuna Products 1+2		280,297	281,600	0	100	38,358	38,156	-0.5	100	1,106	1,211	10	100

3. Thai imports of frozen raw tuna from the world in Jan – June 2018

Product / H.S. Code	Quantity (Ton)		% Growth	%Share	Value (Million Baht)		% Growth	%Share	Value (Million USD)		% Growth	%Share
	Jan - June 2017	Jan - June 2018			Jan - June 2017	Jan - June 2018			Jan - June 2017	Jan - June 2018		
Albacore 0303.41.00	19,275	19,745	2	5	1,955	1,936	-1	9	56	60	8	9
Yellowfin 0303.42.00	62,035	57,761	-7	13	3,995	3,615	-10	16	114	113	-1	16
Skipjack 0303.43.00	236,522	339,606	44	78	12,917	16,055	24	71	368	503	37	71
Bigeye 0303.44.00	20,322	13,023	-36	3	1,233	725	-41	3	35	23	-35	3
other 0303.49.00	6,389	6,484	1	1	226	217	-4	1	6	7	7	1
Total Frozen Tuna	344,543	436,619	27	100	20,327	22,548	11	100	580	706	22	100
Tuna Loin 1604.14.90	2,525	6,184	145	1	313	921	195	4	9	29	224	4
Grand Total	347,068	442,803	28	100	20,639	23,469	14	100	588	735	25	100

4. Thai exports of salmon, sardine and mackerel products to top 5 countries in Jan – June 2018

Product / H.S.Code	Country	Quantity (Ton)		% Growth	%Share	Value (Million Baht)		% Growth	%Share	Value (Million USD)		% Growth	%Share
		Jan - June 2017	Jan - June 2018			Jan - June 2017	Jan - June 2018			Jan - June 2017	Jan - June 2018		
Salmon 1604.11.10	World	5,916	5,019	-15	100	1,384	1,336	-3	100	40	42	6	100
	U.S.A.	2,078	1,900	-9	38	438	466	6	35	13	15	16	35
	Japan	1,893	1,342	-29	27	497	491	-1	37	14	16	9	37
	Australia	914	944	3	19	210	207	-1	16	6	7	9	16
	S. Korea	466	219	-53	4	119	51	-57	4	3	2	-54	4
	Canada	278	202	-27	4	76	47	-38	4	2	1	-32	3
	Others	754	412	-45	8	163	73	-55	5	5	2	-51	5
Sardine 1604.13.11	World	13,924	15,102	8	100	1,100	1,176	7	100	32	37	18	100
	Myanmar	1,616	1,331	-18	9	85	67	-20	6	2	2	-13	6
	Dominican Republic	1,455	1,214	-17	8	89	55	-38	5	3	2	-32	5
	U.S.A.	1,158	819	-29	5	122	77	-37	7	4	2	-31	6
	Laos	240	514	114	3	18	39	115	3	1	1	135	3
	Nicaragua	130	214	65	1	9	14	60	1	0.3	0.4	75	1
	Others	9,325	11,010	18	73	777	924	19	79	22	29	31	79
Mackerel 1604.15.10	World	12,255	13,670	12	100	965	1,085	12	100	28	34	24	100
	Japan	1,563	3,192	104	23	178	367	106	34	5	12	127	34
	U.S.A.	1,129	1,247	10	9	115	108	-7	10	3	3	2	10
	Srilanka	—	567	—	4	—	35	-	3	—	1	—	3
	Jamaica	1,944	2,204	—	16	123	136	-	13	4	4	—	13
	Myanmar	1,327	945	-29	7	89	72	-19	7	3	2	-11	7
	Others	6,291	5,517	-12	40	459	368	-20	34	13	12	-12	34
Total of Fish Products		32,095	33,791	5	100	3,449	3,597	4	100	100	114	15	100

5. Thai imports of frozen raw salmon, sardine and mackerel from the world in Jan – June 2018

Product / H.S. Code	Quantity (Ton)		% Growth	%Share	Value (Million Baht)		% Growth	%Share	Value (Million USD)		% Growth	%Share
	Jan - June 2017	Jan - June 2018			Jan - June 2017	Jan - June 2018			Jan - June 2017	Jan - June 2018		
Salmon 03031300	5,752	5,397	-6	4	1,564	1,078	-31	25	45	34	-25	25
Sardine 03035300	44,380	80,687	82	61	1,088	1,755	61	41	31	55	77	41
Mackerel 03035400	40,891	46,111	13	35	1,356	1,493	10	35	39	47	21	35
Total	91,023	132,195	45	100	4,007	4,326	8	100	114	135	19	100





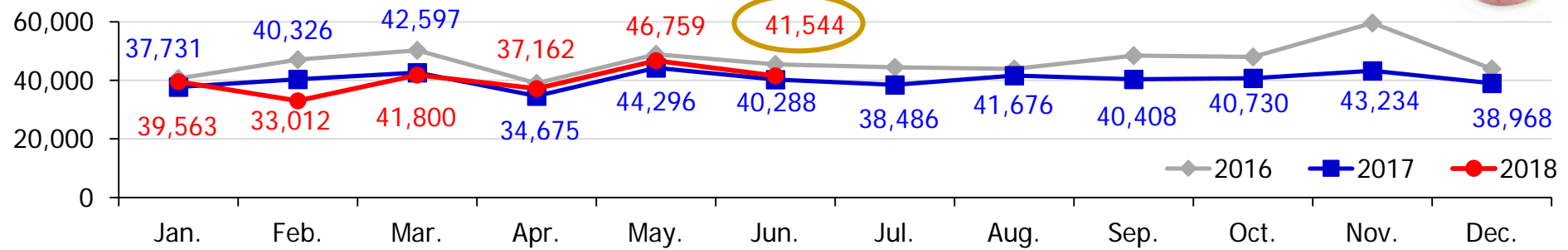
II. Graph : Monthly statistic in 2017/ June 2018

6. Graph :Thai exports quantity of canned / pouch tuna + tuna loin to the world in 2017/ June 2018
7. Graph :Thai exports quantity of petfood (fish) to the world in 2017/ June 2018
8. Graph :Thai imports of frozen whole round tuna from the world in 2017/ June 2018
9. Graph :Thai imports of frozen whole round tuna by species from the world in 2017/ June 2018
 - 9.1 Albacore
 - 9.2 Yellowfin
 - 9.3 Skipjack
 - 9.4 Bigeye

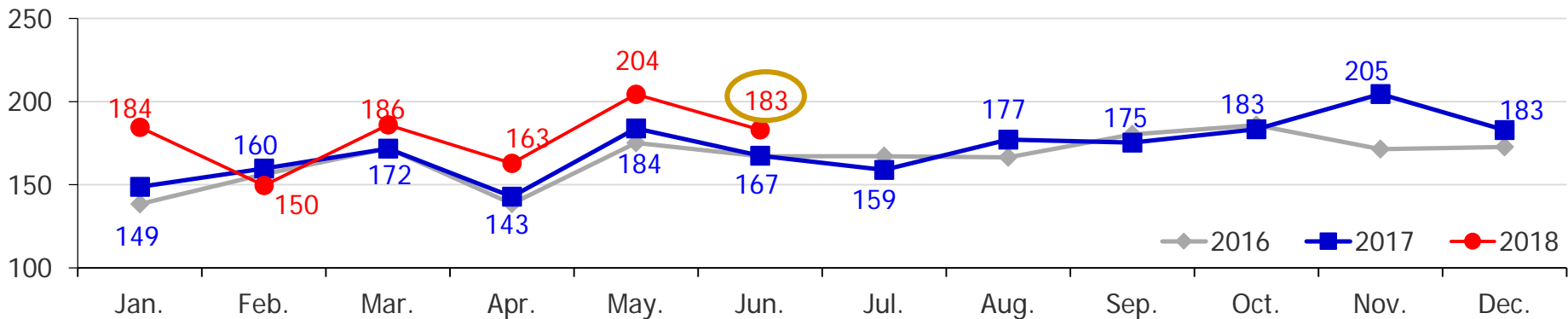
6. Thai exports quantity and value of canned / pouch tuna + tuna loin to the world in 2017/ June 2018



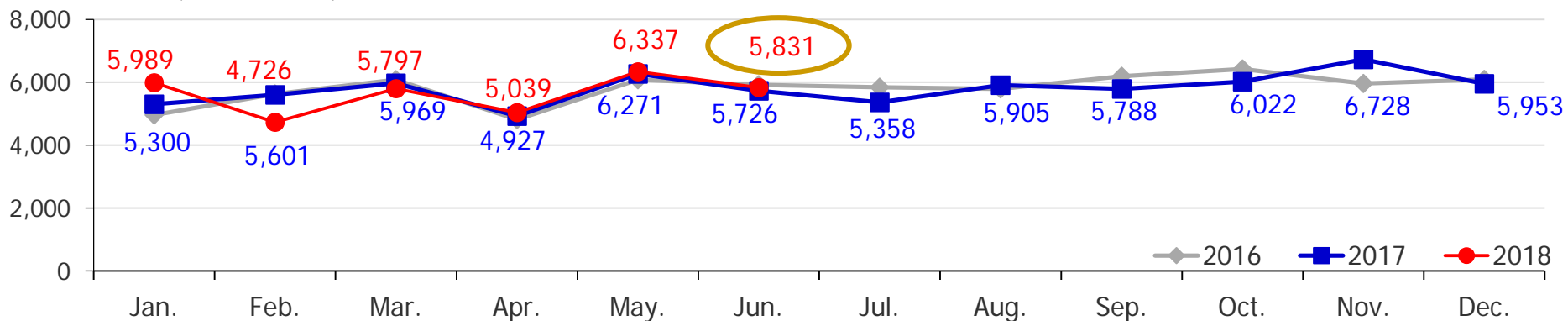
Quantity (Ton)



Value (Million USD)



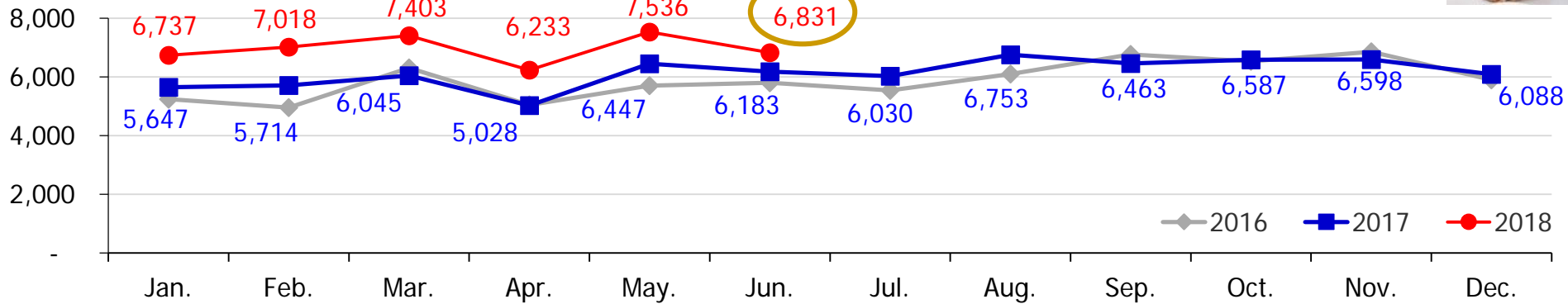
Value (Million Baht)



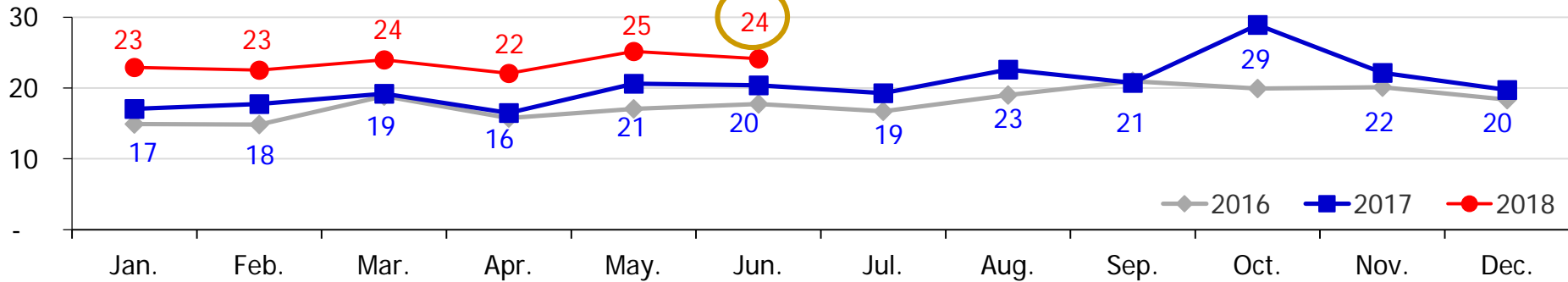
7. Thai exports quantity and value of petfood (fish) to the world in 2017/ June 2018



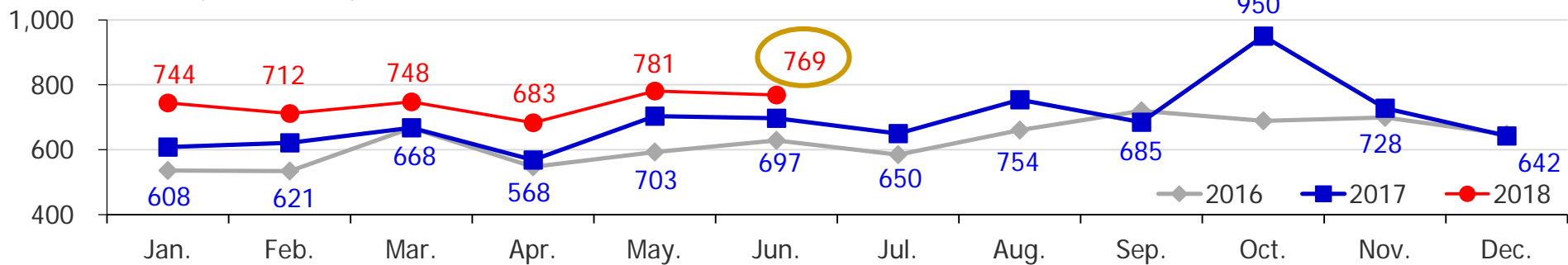
Quantity (Ton)



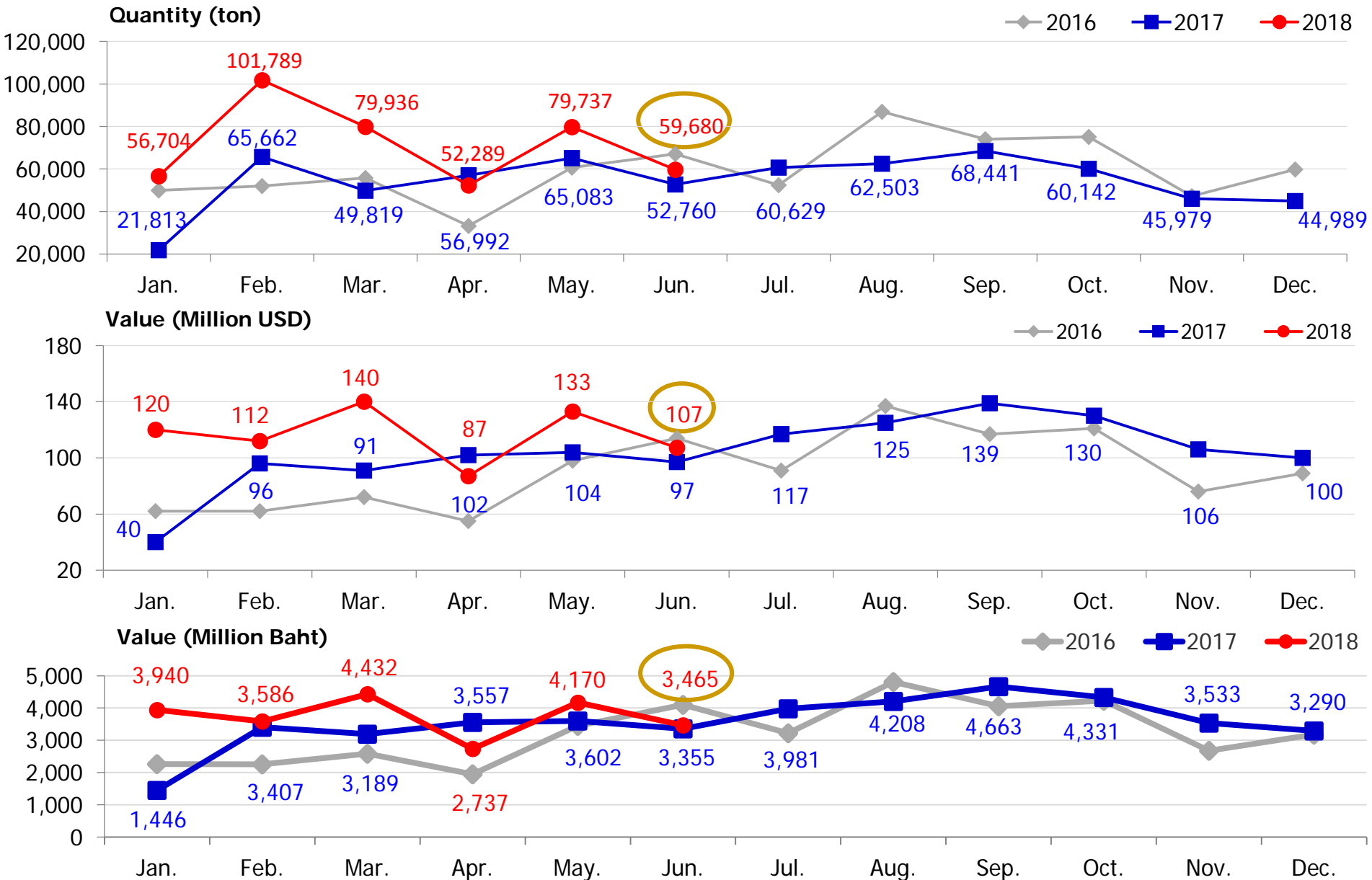
Value (Million USD)



Value (Million Baht)



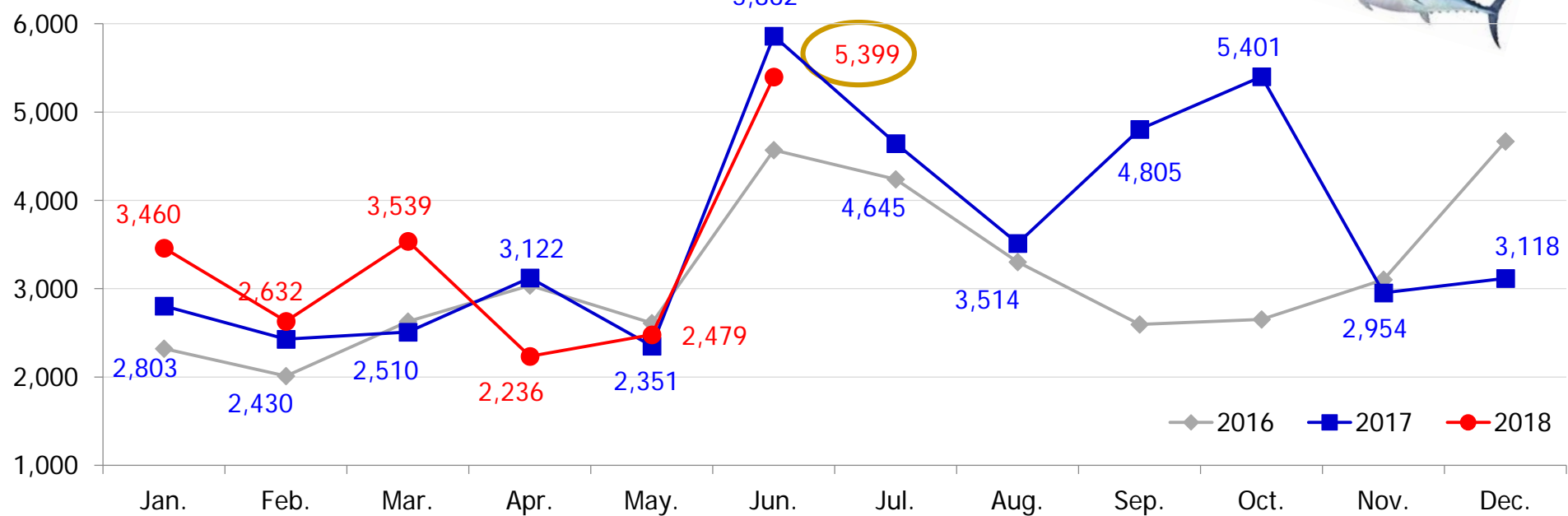
8. Thai imports of frozen whole round tuna from the world in 2017/ June 2018



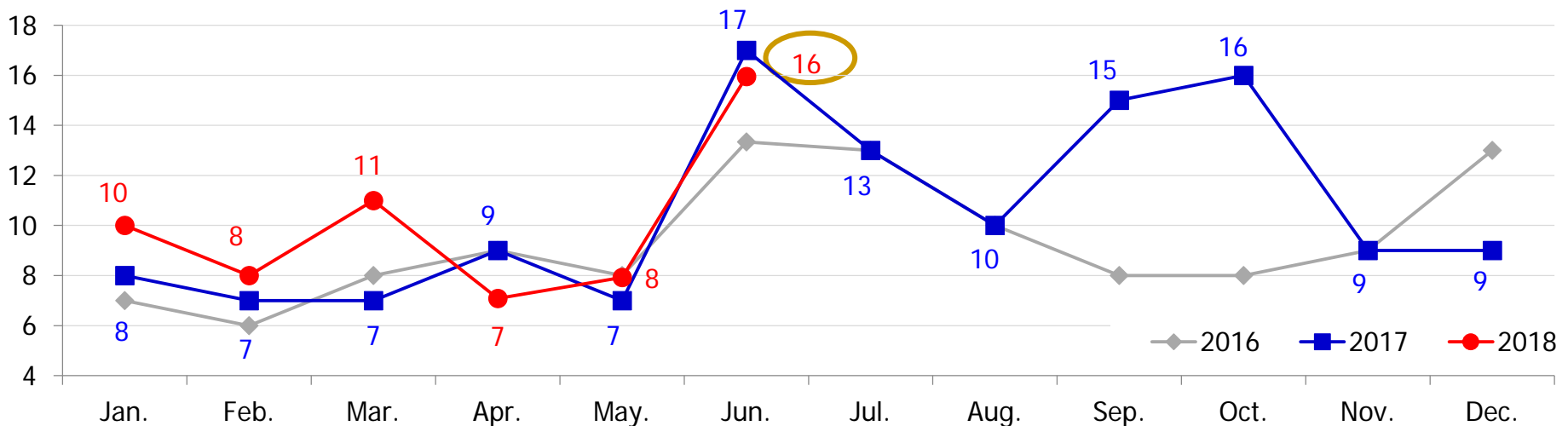
9.1 Thai imports quantity and value of frozen whole round Albacore from the world in 2017/ June 2018



Quantity (ton)



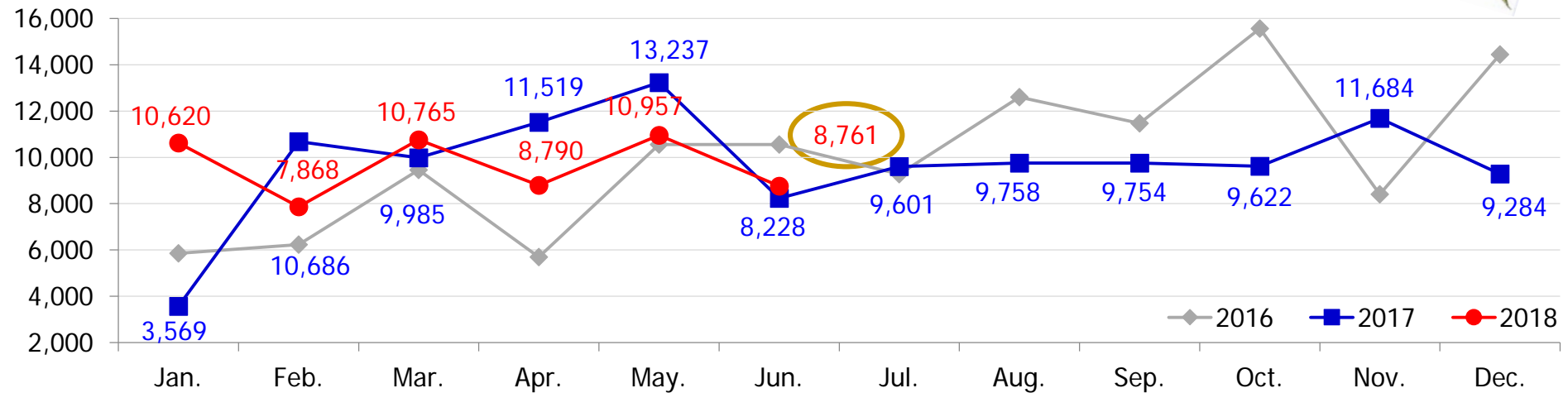
Value (Million USD)



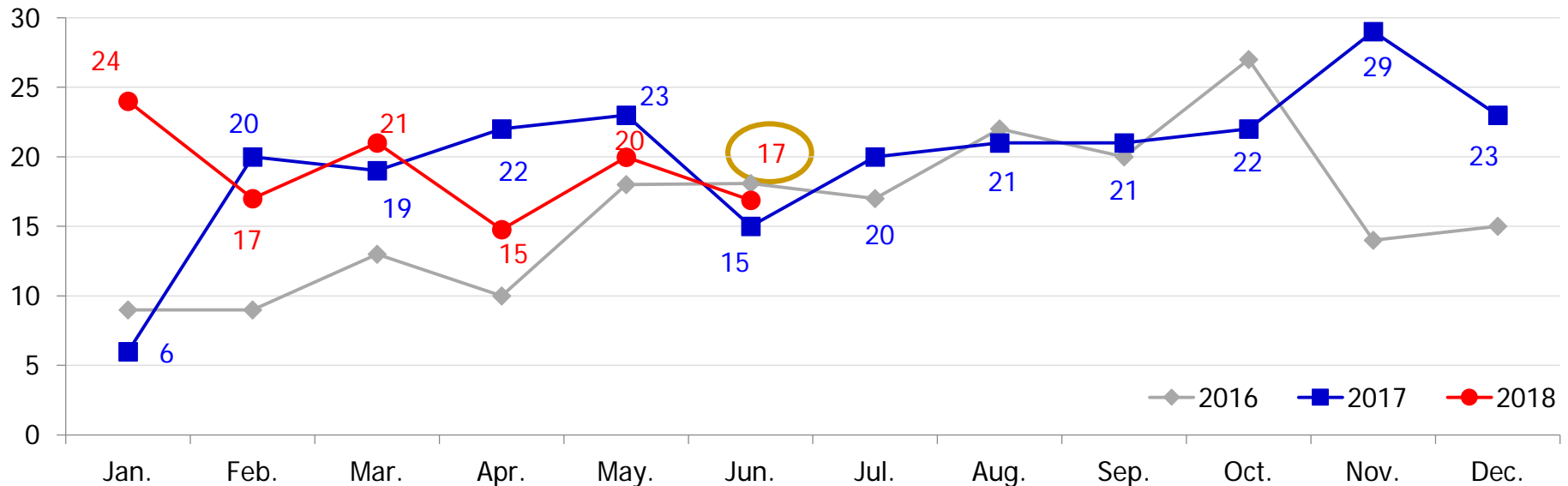
9.2 Thai imports quantity and value of frozen whole round Yellowfin from the world in 2017/ June 2018



Quantity (ton)



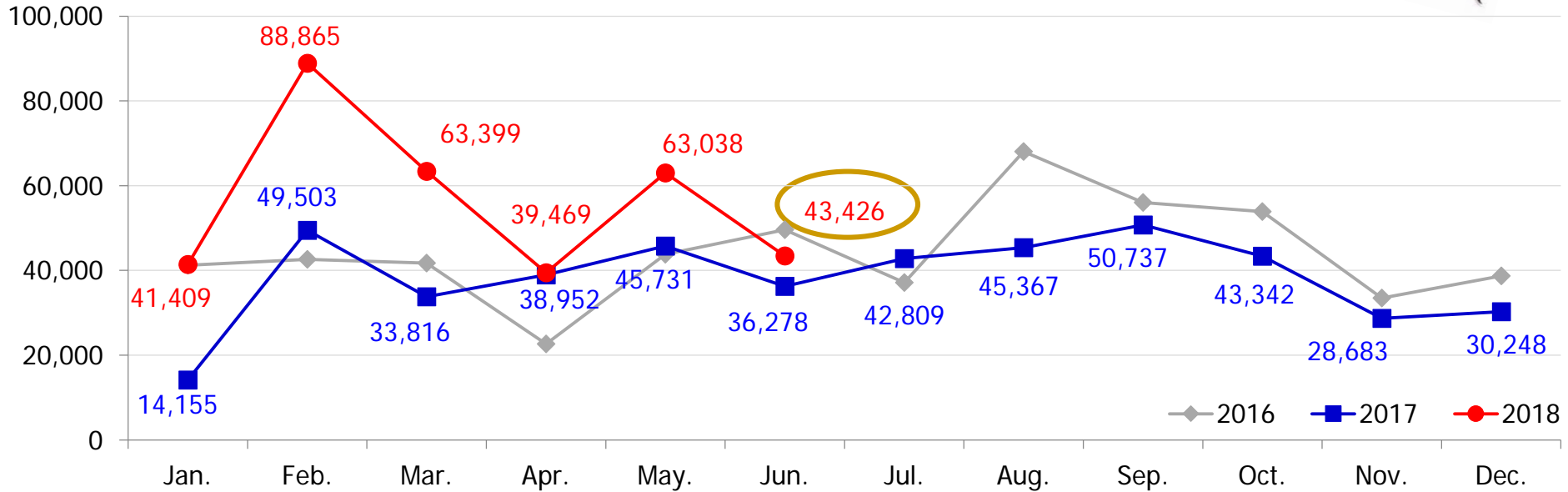
Value (Million USD)



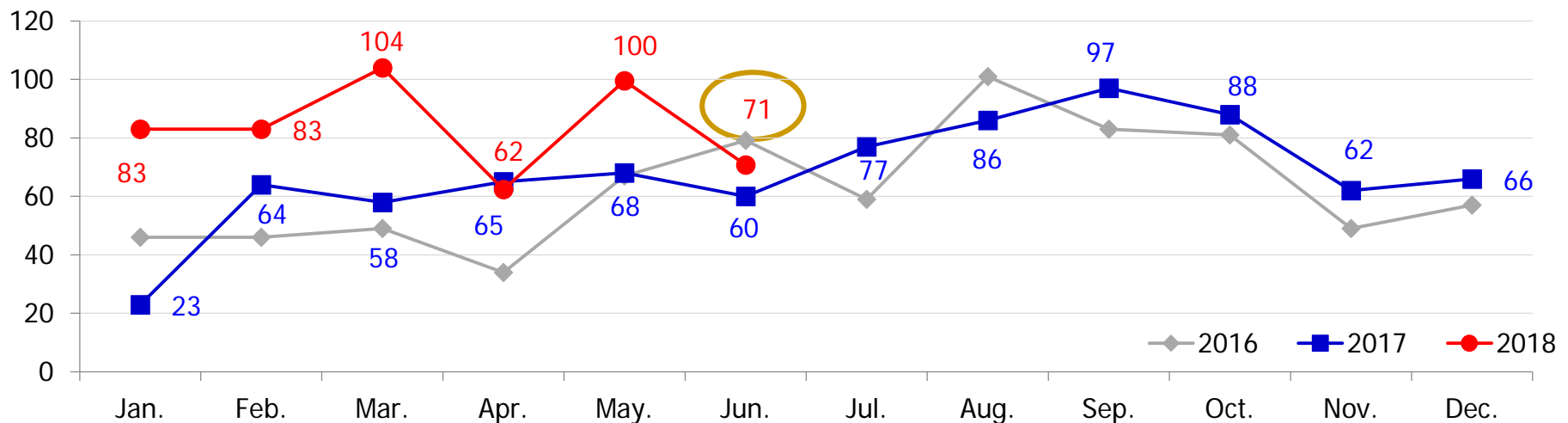
9.3 Thai imports quantity and value of frozen whole round Skipjack from the world in 2017/ June 2018



Quantity (ton)



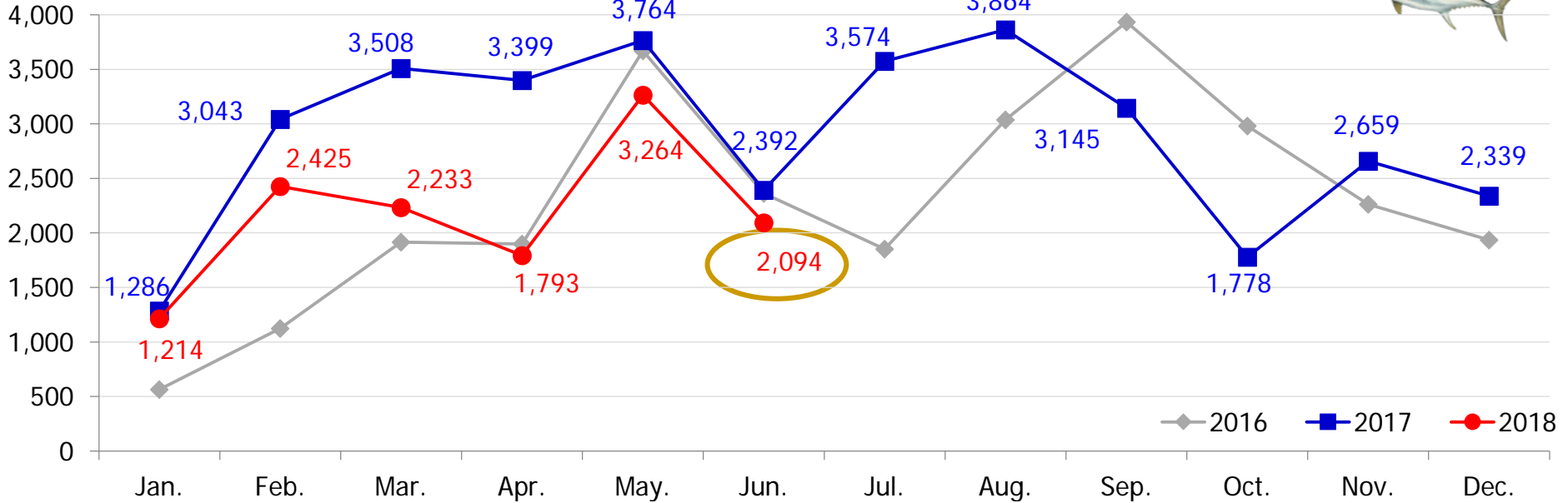
Value (Million USD)



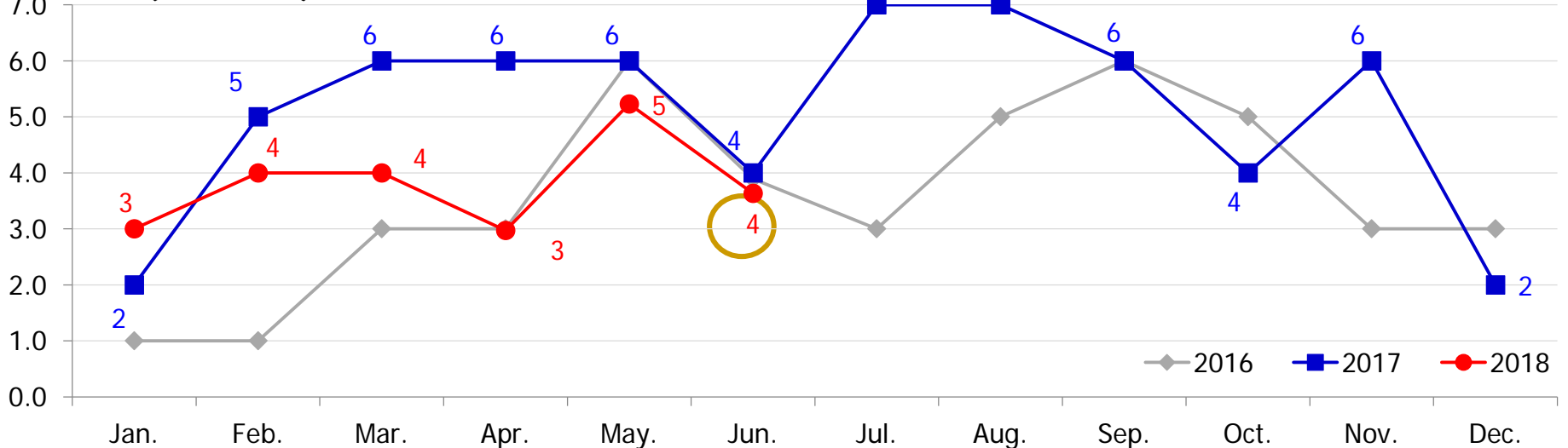
9.4 Thai imports quantity and value of frozen whole round Bigeye from the world in 2017/ June 2018



Quantity (ton)



Value (Million USD)





III. Yearly Statistic in [2015-2017](#)

10. Thai **imports** of frozen raw tuna by species from the world in [2015-2017](#)
11. Thai **imports** of frozen whole round tuna from the world by Countries in [2015-2017](#)
12. Thai **exports** of tuna products to the world, USA, Middle East, EU, Japan and others in [2015-2017](#)
13. Thai **exports** of tuna products to the world by Countries in [2015-2017](#)
14. Thai **exports** of canned / pouch tuna, tuna loin, petfood (fish), salmon, sardine and mackerel to the world in [2015-2017](#)

10. Thai imports of frozen raw tuna by species from the world in 2015-2017

Frozen Raw Tuna / H.S. Code	Quantity (Ton)			% Growth		% Share 2017	Value (Million Baht)			% Growth		% Share 2017	Value (Million USD)			% Growth		% Share 2017
	2015	2016	2017	15/16	16/17		2015	2016	2017	15/16	16/17		2015	2016	2017	15/16	16/17	
Albacore 0303.41.00	34,195	37,813	43,996	11	16	6	3,518	3,911	4,449	11	14	10	104	110	130	7	18	10
Yellowfin 0303.42.00	123,901	124,079	121,911	0	-2	18	5,592	7,032	8,537	26	21	19	164	199	250	21	26	19
Skipjack 0303.43.00	478,700	547,684	476,955	14	-13	68	19,582	27,388	28,820	40	5	64	572	773	843	35	9	64
Bigeye 0303.44.00	19,419	28,994	37,211	49	28	5	633	1,567	2,271	148	45	5	19	44	66	139	49	5
Other 0303.49.00	7,290	11,173	10,392	53	-7	1	284	456	391	61	-14	1	8	13	11	56	-12	1
Total Frozen Raw Tuna	663,505	749,743	690,466	13	-8	99	29,608	40,354	44,469	36	10	98	866	1,139	1,301	31	14	98
Tuna Loin 1604.14.90	23,852	14,809	5,887	-38	-60	1	2,606	1,820	799	-30	-56	2	77	51	23	-33	-54	2
Grand Total	687,358	764,552	696,353	11	-9	100	32,214	42,174	45,267	31	7	100	943	1,191	1,324	26	11	100

11. Thai imports of frozen whole round tuna from the world by Countries in 2015-2017

Product description : HS Code 0303.41 Albacores, 0303.42 Yellowfin, 0303.43 Skipjack, 0303.44 Bigeye and 0303.49 Others tuna

NO.	Country	QUANTITY (Ton)			% Growth		% Share 2017	VALUE (million Baht)			% Growth		% Share 2017	VALUE (million USD)			% Growth		% Share 2017
		2015	2016	2017	15/16	16/17		2015	2016	2017	15/16	16/17		2015	2016	2017	15/16	16/17	
WORLD		663,505	749,743	690,466	13	-8	100	29,608	40,354	44,469	36	10	100	866	1,139	1,301	31	14	100
1	Taiwan	125,070	146,544	118,237	17	-19	17	5,772	8,340	8,292	45	-1	19	170	235	242	38	3	19
2	U.S.A.	91,411	87,839	71,568	-4	-19	10	3,391	4,316	3,744	27	-13	8	98	122	109	24	-11	8
3	S. Korea	85,995	98,783	63,088	15	-36	9	2,831	5,043	4,047	78	-20	9	83	142	119	72	-16	9
4	Kiribati	70,003	64,963	59,210	-7	-9	9	2,917	3,234	3,743	11	16	8	85	91	110	7	21	8
5	Indonesia	38,159	21,034	49,693	-45	136	7	2,060	1,267	3,211	-38	153	7	60	36	95	-40	163	7
6	Maldives	24,451	21,265	39,821	-13	87	6	1,368	1,315	2,722	-4	107	6	40	37	79	-8	114	6
7	China	50,456	49,386	37,402	-2	-24	5	2,367	2,893	2,522	22	-13	6	69	82	73	18	-10	6
8	Japan	30,131	14,225	26,440	-53	86	4	2,061	1,185	2,029	-42	71	5	60	33	60	-45	80	5
9	Marshall Islands	18,834	20,723	12,137	10	-41	2	766	1,081	741	41	-31	2	22	30	22	36	-28	2
10	Vanuatu	10,989	7,680	4,824	-30	-37	1	483	549	514	14	-6	1	14	16	15	7	-3	1
11	Spain	10,272	24,156	20,833	135	-14	3	476	1,350	1,275	183	-6	3	14	38	37	167	-2	3
12	France	3,943	13,179	4,216	234	-68	1	221	715	252	224	-65	1	6	20	7	226	-64	1
Top 10 + 2 Country		559,713	569,776	507,468	2	-11	73	24,714	31,288	33,092	27	6	74	723	882	968	22	10	74
Others		103,792	179,967	182,998	73	2	27	4,894	9,066	11,376	85	25	26	144	257	333	79	29	26

12. Thai exports of tuna products to USA, Middle East, EU, Japan and others in 2015-2017

Product+B2:B K28ts/ H.S. Code	Country	Quantity (Ton)			% Growth		% Share 2017	Value (Million Baht)			% Growth		% Share 2017	Value (Million USD)			% Growth		% Share 2017
		2015	2016	2017	15/16	16/17		2015	2016	2017	15/16	16/17		2015	2016	2017	15/16	16/17	
Canned / Pouch Tuna + Tuna Loin 160414	World	561,500	563,031	490,062	0	-13	100	67,267	70,149	70,422	4	0	100	1,997	2,002	2,082	0	4	100
	U.S.A.	83,775	84,434	89,584	1	6	18	10,956	11,960	14,500	9	21	21	325	341	430	5	26	21
	Middle east	92,598	93,723	85,697	1	-9	17	11,232	12,072	12,011	7	-1	17	334	344	354	3	3	17
	EU	54,055	42,151	31,649	-22	-25	6	7,040	6,012	5,136	-15	-15	7	209	172	152	-18	-12	7
	Japan	33,600	35,686	36,827	6	3	8	5,208	5,709	6,303	10	10	9	155	163	186	5	14	9
	Others	297,291	307,037	241,847	3	-21	49	32,831	34,396	31,913	5	-7	45	975	982	943	1	-4	45
Petfood (fish) 2309.10.10 .001	World	65,652	70,749	73,621	8	4	100	6,827	7,501	8,281	10	10	100	203	214	245	6	14	100
	U.S.A.	6,969	8,695	9,625	25	11	13	777	1,182	1,366	52	16	17	23	34	40	46	20	16
	Middle east	388	496	378	28	-24	1	31	36	35	16	-2	0	0.9	1.0	1.0	11	2	0
	EU	12,289	12,062	14,307	-2	19	19	1,847	1,868	2,194	1	17	27	55	53	65	-3	22	26
	Japan	30,130	30,171	28,794	0	-5	39	2,800	2,832	3,010	1	6	36	83	81	89	-3	10	36
	Others	15,875	19,324	20,516	22	6	28	1,372	1,583	1,674	15	6	20	41	45	50	11	10	20
Total of Tuna Products		626,971	633,780	556,999	1	-12	100	74,093	77,650	77,823	5	0	100	2,199	2,216	2,302	1	4	100

13. Thai exports of tuna products to the world by Countries in 2015-2017

Product description : HS Code 1604.14 Canned Tuna and Tuna Loin

NO.	Country	QUANTITY (Ton)			% Growth		% Share 2017	VALUE (million Baht)			% Growth		% Share 2017	VALUE (million USD)			% Growth		% Share 2017
		2015	2016	2017	15/16	16/17		2015	2016	2017	15/16	16/17		2015	2016	2017	15/16	16/17	
	WORLD	561,500	563,031	483,414	0.3	-14	100	67,267	70,149	69,549	4	-1	100	1,997	2,082	2,057	4.3	-1	100
1	USA	83,775	84,434	89,584	1	6	19	10,956	11,960	14,500	9	21	21	325	341	430	5	26	21
2	Australia	38,387	40,619	39,949	6	-2	8	5,694	6,313	6,569	11	4	9	170	180	194	6	8	9
3	Japan	33,600	35,686	36,827	6	3	8	5,208	5,709	6,303	10	10	9	155	163	186	5	14	9
4	Egypt	70,357	62,218	28,704	-12	-54	6	5,829	5,525	2,695	-5	-51	4	172	158	80	-8	-49	4
5	Canada	27,717	29,756	26,523	7	-11	5	3,912	4,261	4,227	9	-1	6	116	122	125	5	2	6
6	Libya	20,688	30,685	26,576	48	-13	5	2,458	3,864	3,674	57	-5	5	73	111	109	51	-2	5
7	Saudi Arabia	28,543	27,167	21,865	-5	-20	5	3,539	3,543	3,141	0.1	-11	5	106	101	93	-5	-8	5
8	United Arab Emirates	16,920	15,525	18,398	-8	19	4	2,051	2,043	2,633	-0.4	29	4	61	58	78	-4	33	4
9	Chile	12,153	10,405	14,858	-14	43	3	1,168	1,063	1,652	-9	55	2	35	30	49	-12	61	2
10	South Africa	10,684	7,361	11,836	-31	61	2	1,107	816	1,461	-26	79	2	33	23	43	-30	84	2
	Others	342,824	343,856	315,120	0.3	-8	65	41,922	45,097	46,855	8	4	67	1,245	1,287	1,369	3	6	67

14. Thai exports of canned / pouch tuna, tuna loin, tuna petfood, salmon, sardine and mackerel to the world in 2015-2017

Products/ H.S. Code	Quantity (Ton)			% Growth		% Share 2017	Value (Million Baht)			% Growth		% Share 2017	Value (Million USD)			% Growth		% Share 2017
	2015	2016	2017	15/16	16/17		2015	2016	2017	15/16	16/17		2015	2016	2017	15/16	16/17	
Canned / Pouch Tuna + Tuna Loin 1604.14	561,500	563,031	490,062	0	-13	78	67,267	70,149	70,422	4	0	82	1,997	2,002	2,082	0	4	82
Petfood (fish) 2309.10.10.001	65,652	70,749	73,621	8	4	12	6,827	7,501	8,281	10	10	10	203	214	245	6	14	10
Salmon 1604.11.10	16,433	11,905	13,028	-28	9	2	3,864	2,846	3,056	-26	7	4	115	81	91	-29	12	4
Sardine 1604.13.11	61,953	47,032	29,141	-24	-38	5	4,583	3,650	2,230	-20	-39	3	136	104	66	-23	-37	3
Mackerel 1604.15.10	29,734	26,375	24,874	-11	-6	4	1,991	2,077	1,947	4	-6	2	59	59	58	1	-3	2
Total of Products	735,271	719,093	630,726	-2	-12	100	84,531	86,223	85,936	2	-0	100	2,508	2,461	2,541	-2	3	100

IV. Thai H.S. code canned tuna, tuna loin and petfood

พิกัดสินค้าทูน่า

ระบบพิกัดอัตราศุลกากรไทยก่อนปี 2007 : การส่งออกสินค้าปลาทูน่าแปรรูปของไทยไปทั่วโลก ปี 2004-2006

Thai H.S. Code	Description	Quantity (Ton)			% Share 2006
		2004	2005	2006	
1604.140.100	บรรจุภาชนะอัดลม	311,072	368,604	416,203	83
1604.140.201	ไม่บรรจุภาชนะอัดลม	66,447	84,898	85,188	17
1604.14	ปลาทูน่า ปลาสคิปแจ็ก และปลาโบนิโต (ชนิดซาร์ดา)	377,519	453,502	501,391	100

ระบบพิกัดอัตราศุลกากรปี 2007-2011 : การส่งออกสินค้าปลาทูน่าแปรรูปของไทยไปทั่วโลก ปี 2007-2011

Thai H.S. Code	Description	Quantity (Ton)					% Share 2011
		2007	2008	2009	2010	2011	
1604.14.10	ที่บรรจุภาชนะที่อากาศผ่านเข้า	451,094	494,486	494,322	535,480	535,490	93
---- 1604.14.10.001	---- เฉพาะปลาทูน่า	439,921	483,895	485,206	521,205	518,337	90
---- 1604.14.10.090	---- อื่น ๆ	11,173	10,591	9,116	14,275	17,153	3
1604.14.90.000	อื่น ๆ	16,547	11,611	40,168	53,247	40,908	7
1604.14	ปลาทูน่า ปลาสคิปแจ็ก และปลาโบนิโต (ชนิดซาร์ดา)	467,641	506,097	534,491	558,726	576,399	100

ระบบพิกัดอัตราศุลกากรปี 2012-ปัจจุบัน : การส่งออกสินค้าปลาทูน่าแปรรูปของไทยไปทั่วโลก ปี 2012-ปัจจุบัน

Thai H.S. Code	Product Description	Common name	Scientific name	Quantity (Ton)						% Share 2017
				2012	2013	2014	2015	2016	2017	
	- ที่บรรจุภาชนะที่อากาศผ่านเข้าออกไม่ได้									
1604.14.11000	-- ปลาทูน่า	Tunas	Thunnus spp.	411,872	396,695	436,469	377,196	113,721	111,000	23
1604.14.19000	-- ปลาสคิปแจ็ก และปลาโบนิโต (ชนิดซาร์ดา)	Skipjack & Bonito(Sarda spp.)	Euthynnus(Katsuwonus)pelamis and Sarda spp.	136,794	140,280	150,001	177,448	440,342	368,867	76
	- ที่บรรจุภาชนะที่อากาศผ่านเข้าออกได้									
1604.14.90000	- ปลาทูน่า ปลาสคิปแจ็ก และปลาโบนิโต(ชนิดซาร์ดา)	Tunas, skipjack and bonito(Sarda spp.)	Thunnus spp. , Euthynnus(Katsuwonus)pelamis and Sarda spp.	10,826	13,857	9,010	9,892	9,029	3,757	1
1604.14	ปลาทูน่า ปลาสคิปแจ็ก และปลาโบนิโต (ชนิดซาร์ดา)			559,493	550,832	595,479	561,470	563,031	483,414	100

พิกัดอาหารสัตว์เลี้ยง

ระบบพิกัดอัตราศุลกากรไทยปี 2012-ปัจจุบัน : การส่งออกอาหารสัตว์เลี้ยงของไทยไปทั่วโลก ปี **2012-ปัจจุบัน**

* โดยพิกัดอัตราศุลกากรที่ทางสมาคมฯ ใช้เก็บสถิติการส่งออกในสินค้า Petfood คือ พิกัด 2309.10.10.001

Thai H.S. Code	Product Description	Common name	Quantity (Ton)						% Share 2016	% Share 2017
			2012	2013	2014	2015	2016	2017		
2309.10	-อาหารสุนัขหรือแมว จัดทำขึ้นเพื่อการขายปลีก	-Dog or cat food, put up for retail sale:	346,212	377,612	403,615	426,667	455,970	481,576	65	67
2309.10.10	--ที่มีเนื้อสัตว์	--Containing meat	253,266	274,319	288,600	290,935	309,102	344,605	44	48
2309.10.10.001	---ปลาบรรจุภาชนะที่อากาศผ่านเข้าออกไม่ได้	---Fish in airtight containers	70,500	64,381	65,530	65,652	70,749	73,584	23	21
2309.10.10.090	---อื่นๆ	---Other	182,766	209,938	223,069	225,283	238,353	270,990	77	79
2309.10.90	--อื่นๆ (ไม่มีเนื้อสัตว์)	--Other	92,945	103,316	115,017	135,742	146,872	137,001	21	19
2309.90	-อื่นๆ อาหารสัตว์ที่มีสารอาหารครบถ้วน	-Other complete feed	279,115	229,719	266,837	274,429	246,888	232,916	35	33
23.09	ของปรุงแต่งชนิดที่ใช้ในการเลี้ยงสัตว์		625,327	607,331	670,452	701,096	702,858	714,492	100	100



Update สถิติการนำเข้า-ส่งออก ประจำเดือนกรกฎาคม 2561

คาดว่าจะส่งให้สมาชิกประมาณปลายเดือนสิงหาคม 2561